

# The Dalles Dam Fishway Status Report

01/12/19

Inspection Period:01/05/-01/11/2020

## THE DALLES DAM



US Army Corps  
of Engineers  
Portland District

The Dalles Project-Fisheries  
P.O. Box 564  
The Dalles, OR 97058-9998  
Phone: 541-506-3800

<b>The Dalles Dam</b>	<b>Inspections OOC</b>	<b>Criteria Limit</b>	<b>Total Number of Inspections:</b> 7	<b>Temperature:</b> 42.8 °F
			<b>Comments:</b>	<b>Secchi:</b> 5.0 feet

### NORTH FISHWAY

Exit differential	0	≤ 0.5'		
Count station differential	0	≤ 0.3'		
Weir crest depth	0	1.0' ± 0.1'		Velocity of channel flow 2.69 ft/sec. 1/5/2020
Entrance differential	0	1.0' - 2.0'	Average for week =	1.34
Entrance weir N1	0	depth (≥ 8')	Average for week =	9.2
Entrance weir N2	0	Closed		
PUD Intake differential	0	≤ 0.5'		

### EAST FISHWAY

RTS last week Jan

### JUVENILE PASSAGE

Sluiceway operation	0	units 1-1, 8, 18-	Intakes open, Exit Closed
Turbine trashrack drawdown	0	<1.5', biweekly	1/5/2020 fish inspection performed. Some juvenile shad present.
Spill volume/pattern	0	None	
Turbine Unit Priority	0	per FPP	
Turbine 1% Efficiency	0	per FPP	

## OTHER ISSUES:

### Operations

North fish ladder in full operation

East fish ladder remains dewatered. Lower fishway equalized to tailwater.

Spillway closed

### Outages

T10 (MU19 & 20) FOOS through 10/28/2021 due to acetylene levels

MU1 and MU2 restricted to 160 MW combined through 5/28/2020

MU13 OOS 9/23/2019 - 7/22/2020 for Hydraulic Oil System Repairs

MU2 FOOS through 1/2/2019 for hydraulic repairs

MU12 OOS 11/26/2019 - 2/10/2020 T6 GSU Replacement & Annual

MU11 OOS 11/6/2019 - 2/20/2020 T6 GSU Replacement & O/H

F1 & F2 OOS 12/1/2019 - 2/10/2020 for Annual, O/H, FUBB

ROV inspection intakes FU1/2, MU1, MU8, MU18 OOS 1/27 and 1/28

### Maintenance

Calibration check of east openings 12/12/19, 1/5/20 North entrance openings and velocities in criteria.

Collection channel dewatering pumps 5 and 6 removed for rehab. Awaiting new pump motors installation.

Fishway automation replacement installation starting. Brackets for sensors installed at east entrance.

Exit weirs 154 and 155 removed. Wheel replacement and steel panel repair complete. Weir 155 guide repair complete. Gaps filled for lamprey pass improvement.

West entrance weir W1 cable problem corrected.

Repaired 2 of 4 failed south entrance diffuser valves. Planning underway for remaining diffuser valves.

Three expansion joint repairs on east fishladder completed.

Damaged weir cap east entrance E2 weir completed.

Weir 157 failed brake to be repaired before Mar1.

Spillway assessment (MRER); No funding for FY20. Spillgate 9 fish priority included.

### Predators

Green laser use continues for piscivorous bird hazing testing. Refer to tab. Laser use on DCCO foraging on juv. shad. No DCCO present on breeding sites.

USDA hazing resumes 4/15/20

Eagle numbers in normal range and locations. Cormorant and gull numbers fluctuating daily, with expected winter numbers.

No sea lion observations this week. Last sighting May9.

### Research/Construction/Contractors

Four Peaks fish counting concluded October 31. Cleaning count stations

AWS backup - Follow on contract in progress. Commissioning scheduled third week Feb.

PITAGS north and east fishladder data collection at count stations continues.

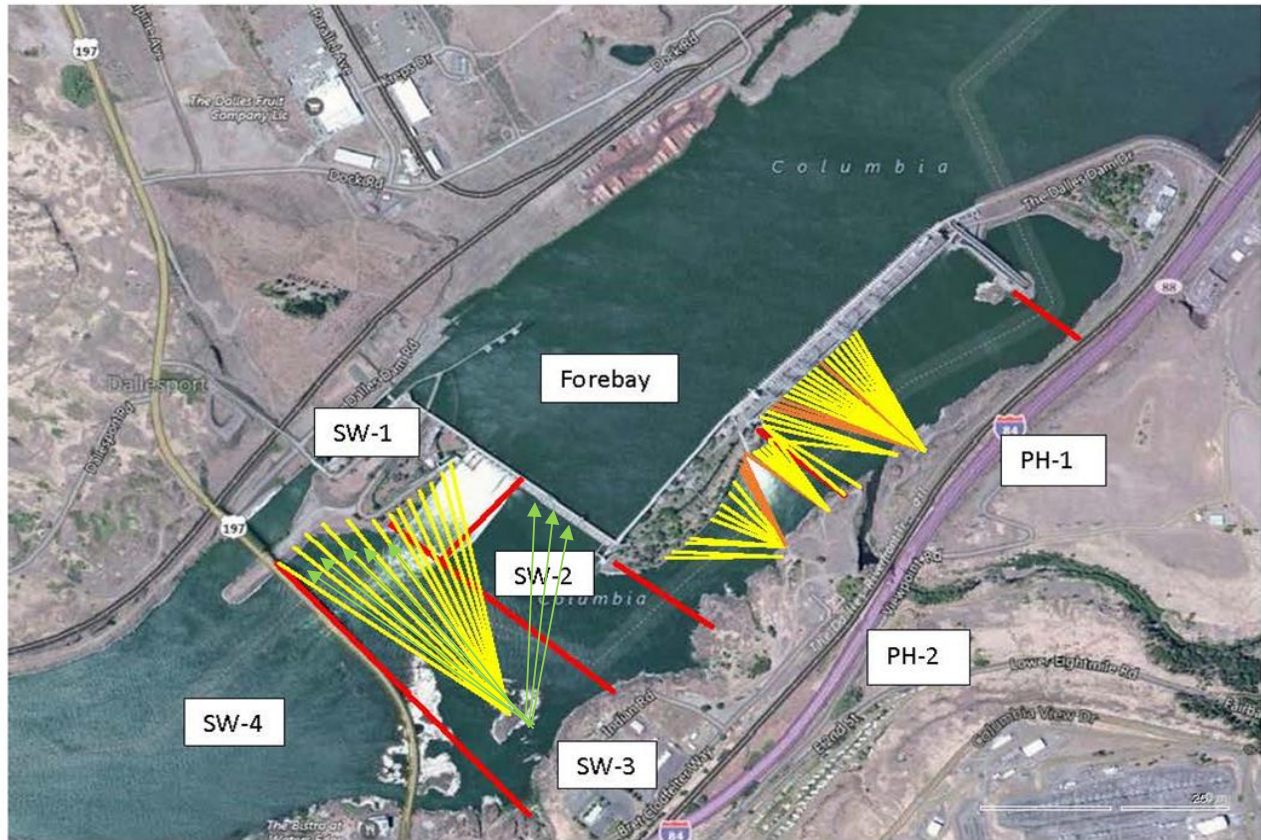
Dam angling 2019 total 2228 pikeminnow, 98 smallmouth bass and 6 walleye caught. **Bass/Walleye released due to being state game species.**

Fish unit breaker replace.- Planning third season work Dec1-end Jan. Commissioning first week of Feb.

Fish unit rehab - Phase 1A. Planning operation scenario during construction. No funding.

Approved by: Bryan Hert for Mike Colesar

Operation Project Manager The Dalles Dam

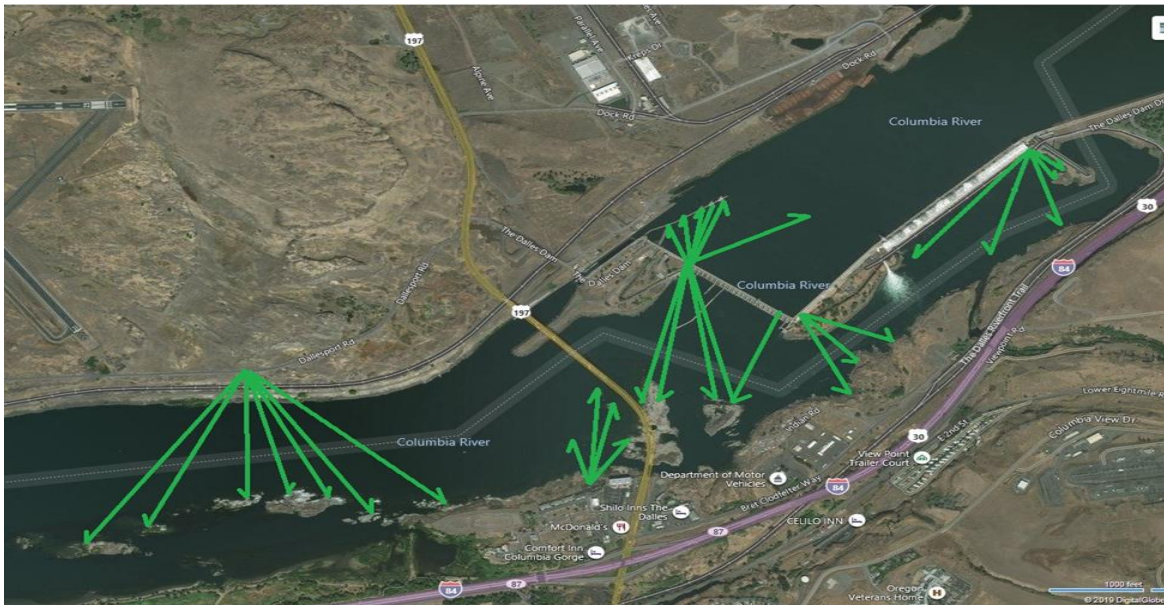


Red lines = avian zones

Yellow lines = current wires

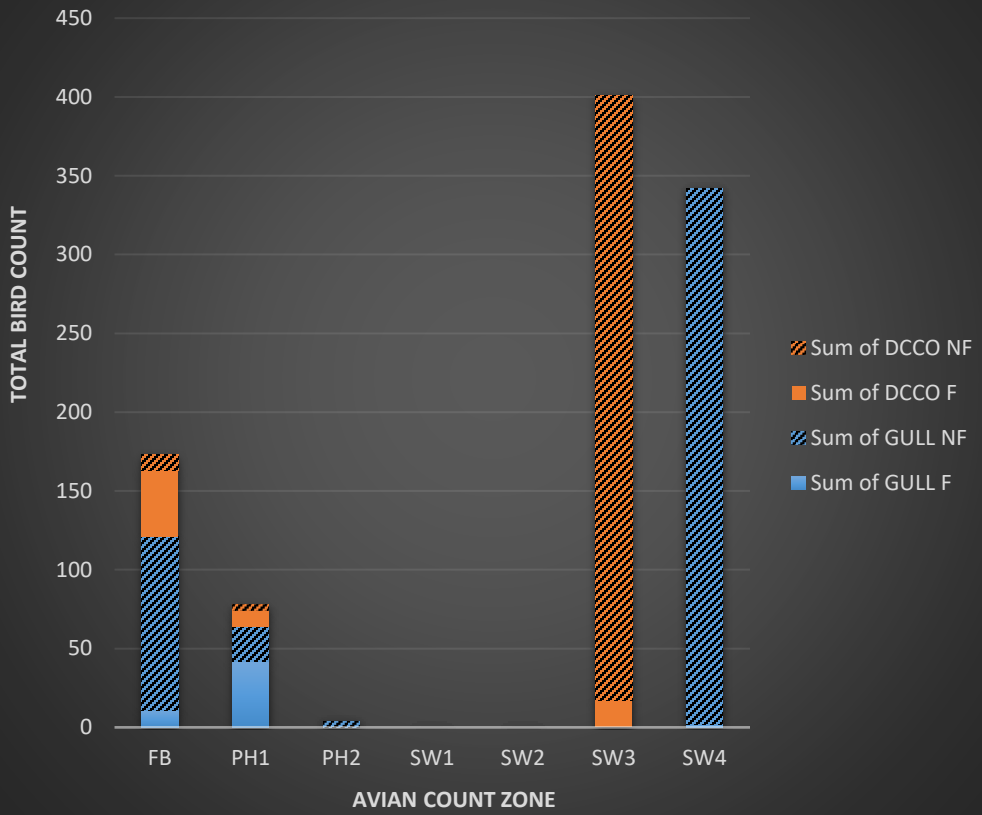
Orange lines = down or missing wires

→ Avian Lines (above) and laser deterrent zones (below)



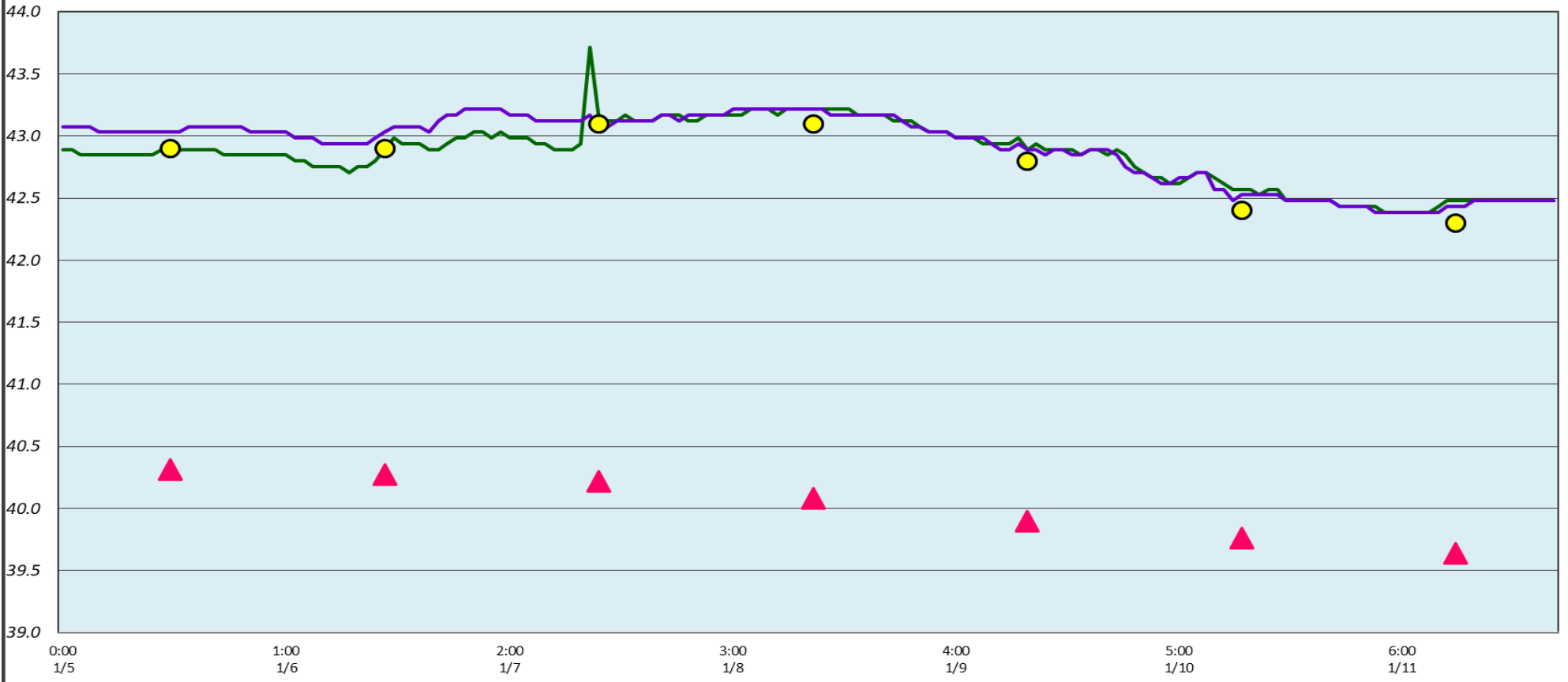


# Bird Activity by Zone 1/5 - 1/11



# The Dalles Dam North Fish Ladder/River Temperatures

— North Count Station — North Entrance ● Current USGS Daily Average ▲ USGS Daily Average (2007-2019)



[USGS Link](#)

	Secchi:		°F
1/5	5.0	Sun	42.9
1/6	5.0	Mon	42.9
1/7	5.0	Tue	43.1
1/8	5.0	Wed	43.1
1/9	5.0	Thurs	42.8
1/10	5.0	Fri	42.4
1/11	5.0	Sat	42.3
	5.0	AVG	42.8

The Dalles Dam Daily Readings and Averages for  
Temperatures, Secchi, Entrances, and Spill

Date:	North Ladder Entrance		East Ladder											
	Differential	N1 Depth	East Entrance					West Entrance			South Entrance			
			Differential	E1 Depth	E2 Depth	E3 Depth	JP 6	Differential	W1	W2	W3	Differential	S1	S2
1/5	1.2	9.0												
1/6	1.4	8.9												
1/7	1.4	9.1												
1/8	1.4	9.2												
1/9	1.4	9.3												
1/10	1.3	9.4												
1/11	1.3	9.4												
<b>AVG:</b>	<b>1.3</b>	<b>9.2</b>												

Ladder dewatered for winter maintenance